



TRANSFORMATIVE GOVERNANCE: LOCAL LEVEL IS KEY

Prof.dr. Jacqueline Broerse
Athena Institute, Vrije Universiteit Amsterdam

Conference on Transformative Governance for Food
Systems and Biodiversity
Copenhagen, 3 December 2025



IS VERDER KIJKEN

ROUTES TO TRANSFORMATION

- Two main routes to system transformation
- **Top-down** system change through EU and national policies
 - Change in **structure** with (implicit) expectation that practice and culture will follow
 - But people often push back, feeling sidelined and overwhelmed – measures don't connect
- **Bottom-up** system change through innovations at pilot scale that will then scale up
 - Change in **practice** with (implicit) expectation that structure and culture will follow
 - But often not supported by higher level policies
- Need to connect both top-down and bottom up routes with explicit attention to **culture**!

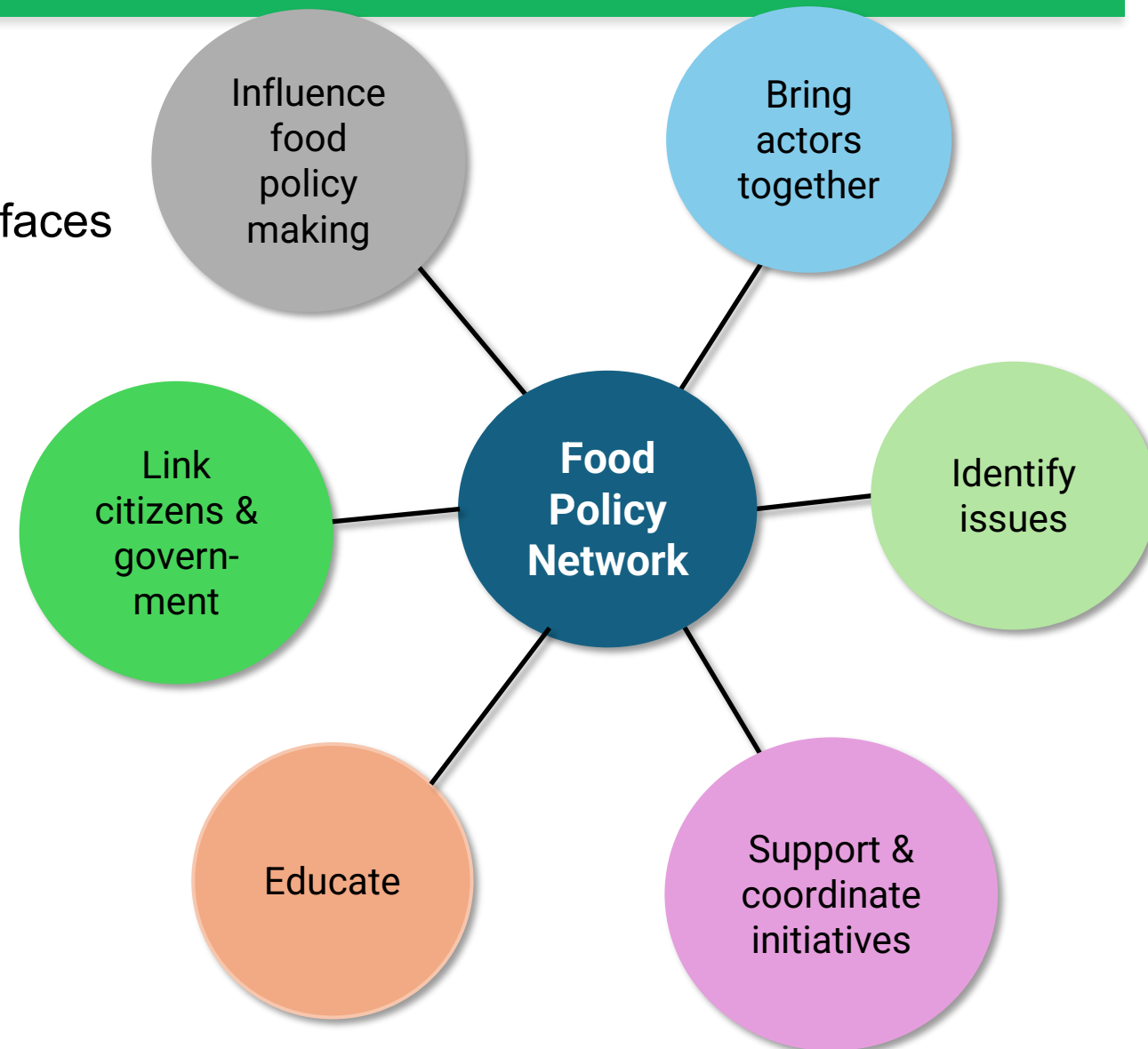


**Transformative
governance is
complicated**

COMPREHENSIVE MODEL TO TRANSFORMATIVE GOVERNANCE

Development of **science-policy-society** interfaces

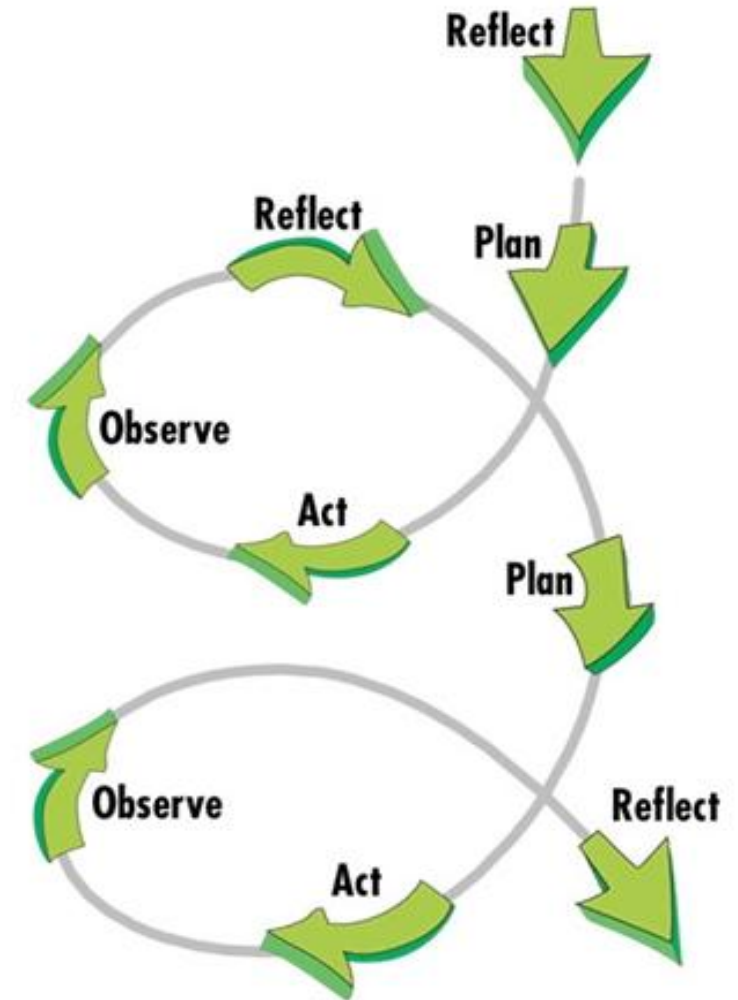
- Strengthening **Food Policy Networks** – quadruple helix



TRANSFORMATIVE GOVERNANCE – COMPREHENSIVE MODEL

Development of **science-policy-society** interfaces

- Strengthening **Food Policy Networks** – quadruple helix
- **System analysis, visioning, backcasting**
- **Co-creation** and testing of interventions in **Living Labs** through action-learning cycles
- Lessons learned from the Living Labs provide evidence to inform **practice** and **integrated food policies**



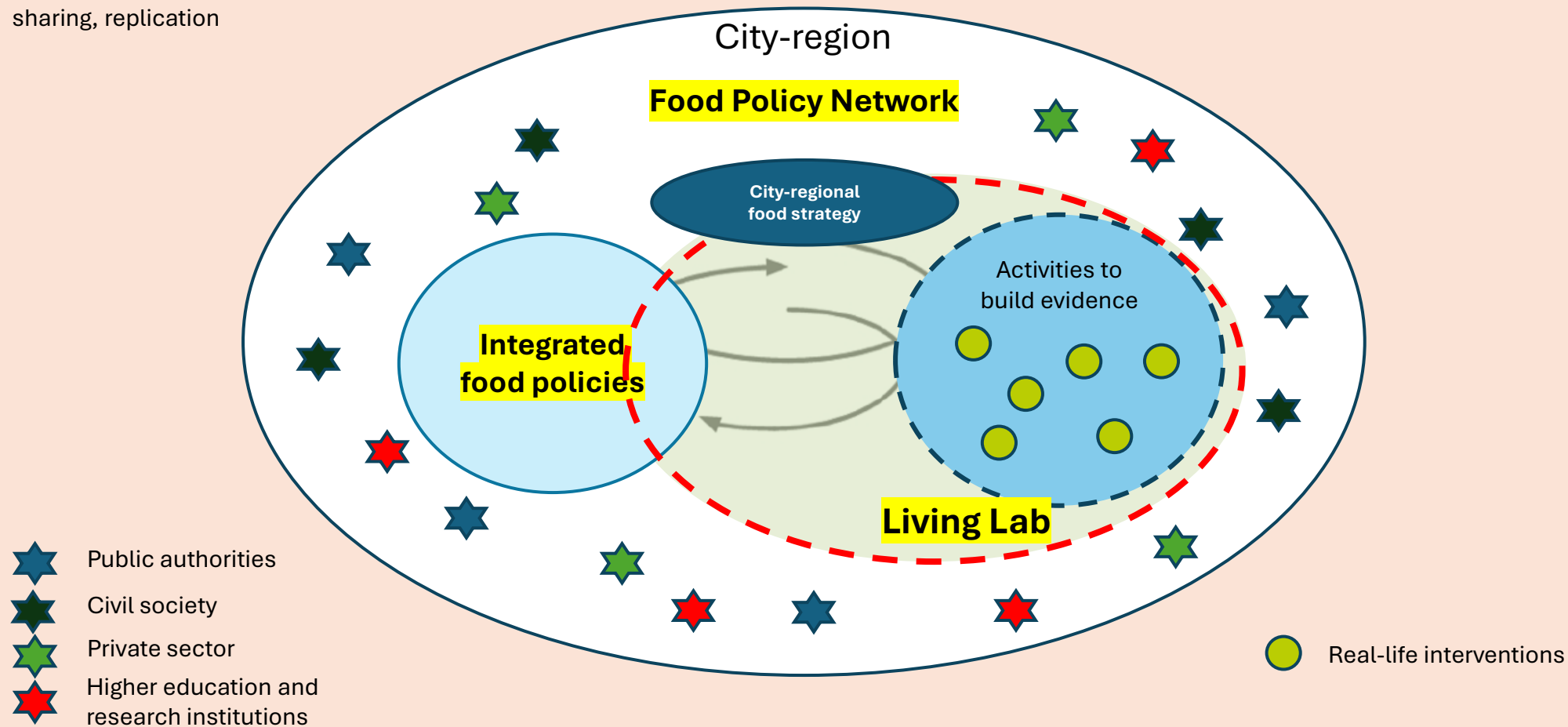
Action-learning cycles

FOODCLIC'S SCIENCE-POLICY-SOCIETY INTERFACE

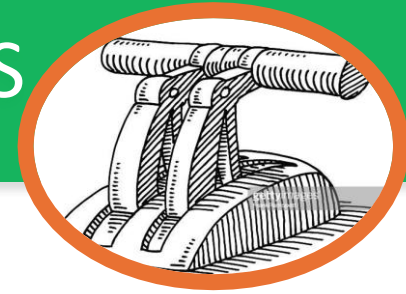


(Inter-)national context

Networking, knowledge-sharing, replication



EXPERIMENTATION – INTERVENTION PACKAGES



LIVING LAB AMSTERDAM



Amsterdam Southeast

- Professionalisation of neighbourhood cooks
- Community gardens
- Culturally adapted healthy cooking workshops
- Strengthen links with municipal district

**Amsterdam North
Haarlem Schalkwijk**



Community supported Agriculture (CSA)

- Making it better known
- Ensure year round supply
- Diversify clients



Sustainable procurement

- Covenant 11 large employers and institutions to cater healthy more sustainably produced food and reduce food waste
- Community of practice



Food strategy of municipalities

- Amsterdam Food strategy 2.0 – new strategy focused around food environments (place-based) instead of domain specific
- Community of Practice of policy makers – 12 municipalities share and learn about setting up integrated food strategies – coordinated by the Amsterdam Metropolitan Area Agency
- Link to the national level (upcoming)

LESSONS LEARNED



- Making smart combination of top-down and bottom-up at the local level
- Policy integration both horizontal as well as vertical to overcome fragmentation
- Action research and learning go hand-in-hand with continuous translation to practice and policy (barriers and facilitators)
- Key importance of meaningful engagement – how to strengthen competences?



FOOD2030 TOOLKIT FOR PUBLIC ENGAGEMENT

- Online tools have been developed to facilitate engagement but scattered or filled with dead links
- CLEVERFOOD: provided a structured overview of tools for engagement in food system transformation → toolkit
- Stakeholder engagement in food system transformation feeds into distinct objectives of transformative governance



<https://food2030.eu/toolkit-for-engagement>