



# Nexus Assessment on Interlinkages among Biodiversity, Water, Food, Health and Climate Change

**Professor Paula Harrison,  
Nexus Assessment Co-chair**

***UK Centre for Ecology & Hydrology***

**[www.ipbes.net](http://www.ipbes.net)**

The Intergovernmental Science-Policy Platform  
on Biodiversity & Ecosystem Services

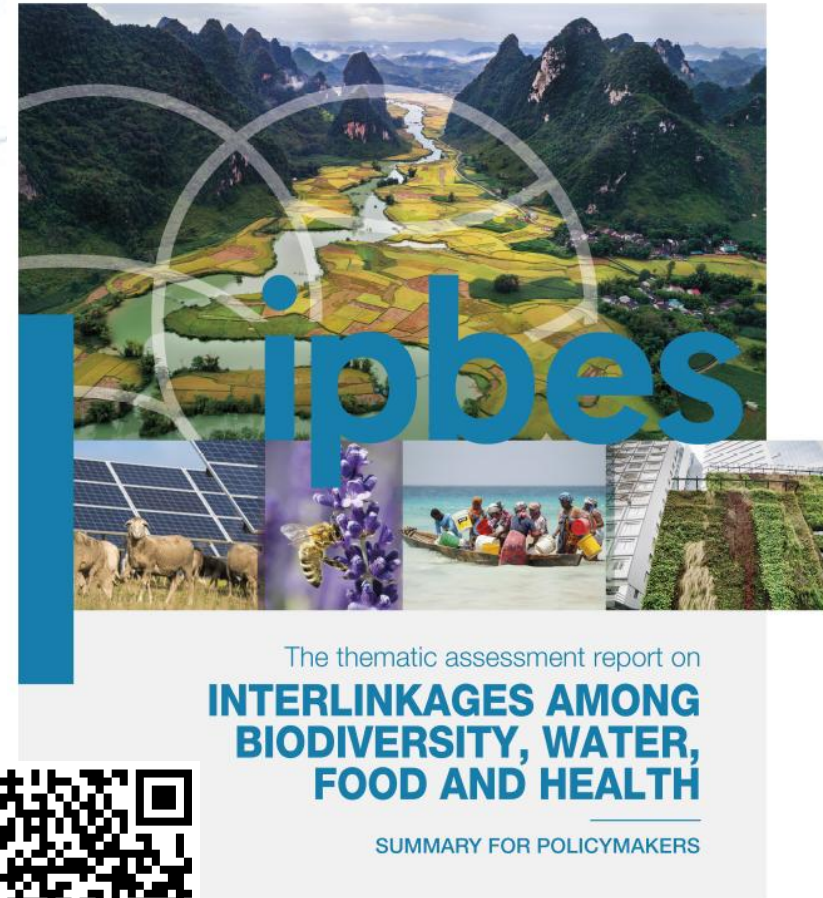


Food and Agriculture  
Organization of the  
United Nations



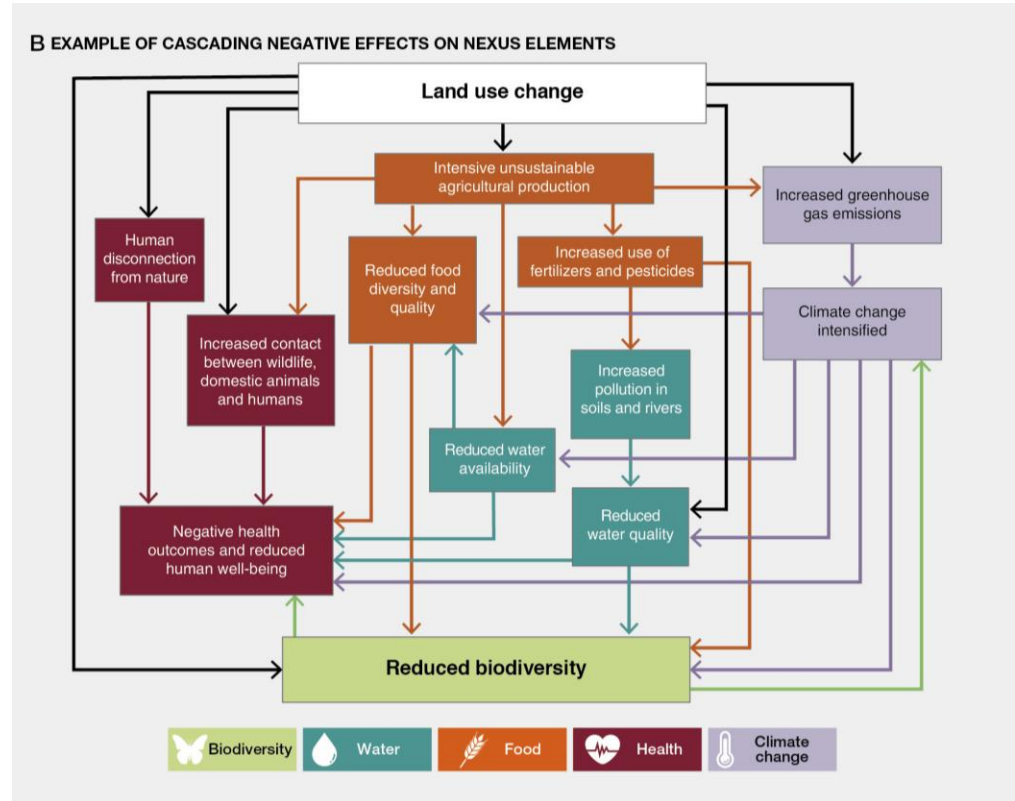
# IPBES Nexus Assessment

- Our global crises are interlinked
  - Our responses are not
- Solutions already exist
  - > 70 response options assessed
- Role for everyone
  - Collaboration required



# Biodiversity, climate, water, food and health crises interact, cascade and compound each other

- Current efforts have failed to address these crises because they are fragmented, don't account for underlying causes and work in isolation
- Evidence shows that biodiversity is essential for water, food, health and climate, yet is declining in all regions
- Biodiversity funding gap: \$0.3–1 trillion per year





# Many response options have benefits across multiple nexus elements

Response option		Biodiversity	Water	Food	Health	Climate change
Conserve ecosystems	B01	Area-based conservation	●	●	●	●
	F01	Halt conversion of ecosystems of high ecological integrity	●	●	●	●
	H10	Forest conservation for health	●	●	●	●
Restore ecosystems	B05	Forest landscape restoration	●	●	●	●
	B06	Restoration of coastal and marine systems	●	●	●	●
	B07	Restoration of inland water systems	●	●	●	●
	B08	Rewilding	●	●	●	●
	F02	Restore soil health	●	●	●	●

Response option		Biodiversity	Water	Food	Health	Climate change
Conserve ecosystems	B01	Area-based conservation	●	●	●	●
	F01	Halt conversion of ecosystems of high ecological integrity	●	●	●	●
	H10	Forest conservation for health	●	●	●	●
Restore ecosystems	B05	Forest landscape restoration	●	●	●	●
	B06	Restoration of coastal and marine systems	●	●	●	●
	B07	Restoration of inland water systems	●	●	●	●
	B08	Rewilding	●	●	●	●
	F02	Restore soil health	●	●	●	●
	H08	Mangrove conservation and restoration for health	●	●	●	●
Manage ecosystems	C04	Wetland conservation and restoration	●	●	●	●
	C13	Restoration of coastal and marine ecosystems for carbon sequestration	●	●	●	●
	B03	Agroecology*	●	●	●	●
Manage ecosystems	C11	Agroecology*	●	●	●	●
	W05	Sustainable inland fisheries	●	●	●	●
Manage ecosystems	W11	Manage alien species	●	●	●	●

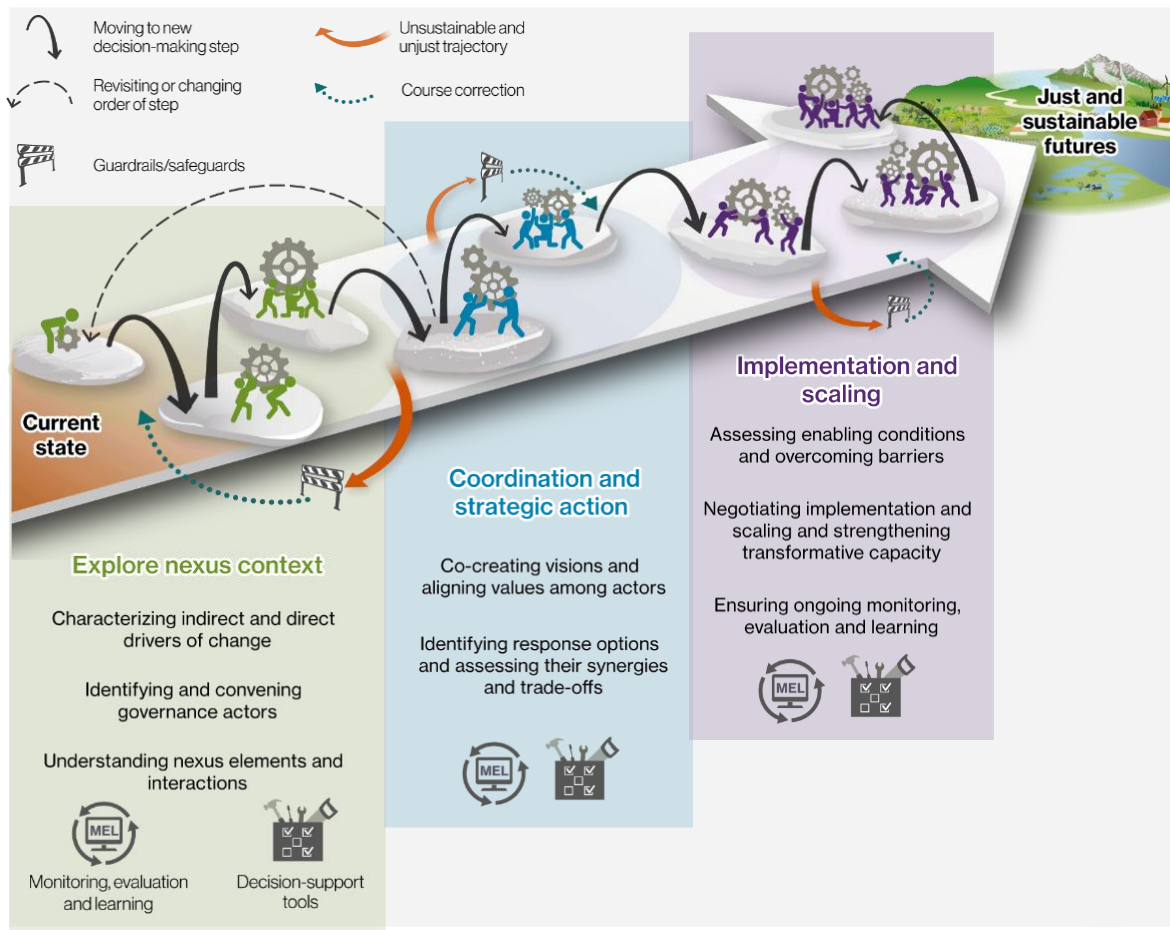
Response option		Biodiversity	Water	Food	Health	Climate change
Integrate planning and governance	B09	Integrated landscape and seascape approaches	●	●	●	●
	B12	Land and sea planning	●	●	●	●
	W02	Integrated water infrastructure	●	●	●	●
	W08	Transboundary water cooperation	●	●	●	●
	W09	Groundwater governance	●	●	●	●
	W13	Water-sensitive urban infrastructure	●	●	●	●
Manage risk	W15	Community water management	●	●	●	●
	F12	City region food systems	●	●	●	●
	H12	Integrated watershed-health interventions	●	●	●	●
Manage risk	B02	Urban nature-based solutions*	●	●	●	●
	C14	Ecosystem-based adaptation in rural landscapes	●	●	●	●
	W03	Dam operation	●	●	●	●
Manage risk	H03	Net-zero sustainable healthcare	●	●	●	●
	H09	Urban green infrastructure	●	●	●	●
	H11	Biodiversity management for zoonoses	●	●	●	●
Manage risk	H13	Health impact assessments	●	●	●	●
	H14	The One Health approach	●	●	●	●
	C09	Multi-hazard early warning systems	●	●	●	●
Manage risk	B10	Rights-based approaches	●	●	●	●
	W01	Inclusive water education	●	●	●	●
	W06	Inclusive water management	●	●	●	●
Manage risk	W07	Rights of nature	●	●	●	●
	W14	Address gendered burdens of water collection	●	●	●	●
	F14	Foster gender-transformative approaches	●	●	●	●
Manage risk	F15	Indigenous food systems	●	●	●	●
	F16	Access to natural resources and land	●	●	●	●
	H01	Universal health coverage	●	●	●	●
Manage risk	H02	Intercultural health services	●	●	●	●
	B13	Natural capital accounting	●	●	●	●
	W10	Finance for water infrastructure	●	●	●	●
Manage risk	F13	Reform public spending	●	●	●	●
	C10	Global cooperation for finance and technology	●	●	●	●
	B11	Multilateral environmental agreements	●	●	●	●
Manage risk	B14	Reconnecting people with nature	●	●	●	●
	H05	Nature on prescription	●	●	●	●
	H15	Integrated health education	●	●	●	●
Manage risk	H03	Net-zero sustainable healthcare	●	●	●	●
	H09	Urban green infrastructure	●	●	●	●

Response option		Biodiversity	Water	Food	Health	Climate change
Integrate planning and governance	B09	Integrated landscape and seascape approaches	●	●	●	●
	B12	Land and sea planning	●	●	●	●
	W02	Integrated water infrastructure	●	●	●	●
Manage risk	W08	Transboundary water cooperation	●	●	●	●
	W09	Groundwater governance	●	●	●	●
	W13	Water-sensitive urban infrastructure	●	●	●	●
Manage risk	W15	Community water management	●	●	●	●
	F12	City region food systems	●	●	●	●
	H12	Integrated watershed-health interventions	●	●	●	●
Manage risk	B02	Urban nature-based solutions*	●	●	●	●
	C14	Ecosystem-based adaptation in rural landscapes	●	●	●	●
	W03	Dam operation	●	●	●	●
Manage risk	H03	Net-zero sustainable healthcare	●	●	●	●
	H09	Urban green infrastructure	●	●	●	●
	H11	Biodiversity management for zoonoses	●	●	●	●
Manage risk	H13	Health impact assessments	●	●	●	●
	H14	The One Health approach	●	●	●	●
	C09	Multi-hazard early warning systems	●	●	●	●
Manage risk	B10	Rights-based approaches	●	●	●	●
	W01	Inclusive water education	●	●	●	●
	W06	Inclusive water management	●	●	●	●
Manage risk	W07	Rights of nature	●	●	●	●
	W14	Address gendered burdens of water collection	●	●	●	●
	F14	Foster gender-transformative approaches	●	●	●	●
Manage risk	F15	Indigenous food systems	●	●	●	●
	F16	Access to natural resources and land	●	●	●	●
	H01	Universal health coverage	●	●	●	●
Manage risk	H02	Intercultural health services	●	●	●	●
	B13	Natural capital accounting	●	●	●	●
	W10	Finance for water infrastructure	●	●	●	●
Manage risk	F13	Reform public spending	●	●	●	●
	C10	Global cooperation for finance and technology	●	●	●	●
	B11	Multilateral environmental agreements	●	●	●	●
Manage risk	B14	Reconnecting people with nature	●	●	●	●
	H05	Nature on prescription	●	●	●	●
	H15	Integrated health education	●	●	●	●

Nexus elements

● Biodiversity
 ● Water
 ● Food
 ● Health
 ● Climate change

# Everyone has a role to play in implementing nexus approaches



## Roadmap of nexus action

# Conclusions

- Urgent action is needed to tackle our interlinked crises
- The assessment provides decision-makers with the best-available evidence on the interlinkages among biodiversity, water, food, health and climate change
- A wide range of response options are available now for tackling our crises together. Increased financial support and scaling these out will be crucial
- Evidence and tools are available on the interlinkages among biodiversity, water, food, health and climate change to support decision-makers in developing integrated decisions and actions
- This includes guidance on how economic, financing and governance systems can evolve towards holistic and integrated approaches
- Recognizes and emphasizes the role different actors have in addressing global crises challenges and ensuring more just and sustainable outcomes for people and nature







**#NexusAssessment**

**Thank you!**  
**¡Gracias!**  
**Merci!**

**Find the Summary for  
Policymakers here:**



**For further information:**  
**[www.ipbes.net/nexus-assessment](http://www.ipbes.net/nexus-assessment)**

**Email: [PaulaHarrison@ceh.ac.uk](mailto:PaulaHarrison@ceh.ac.uk)**